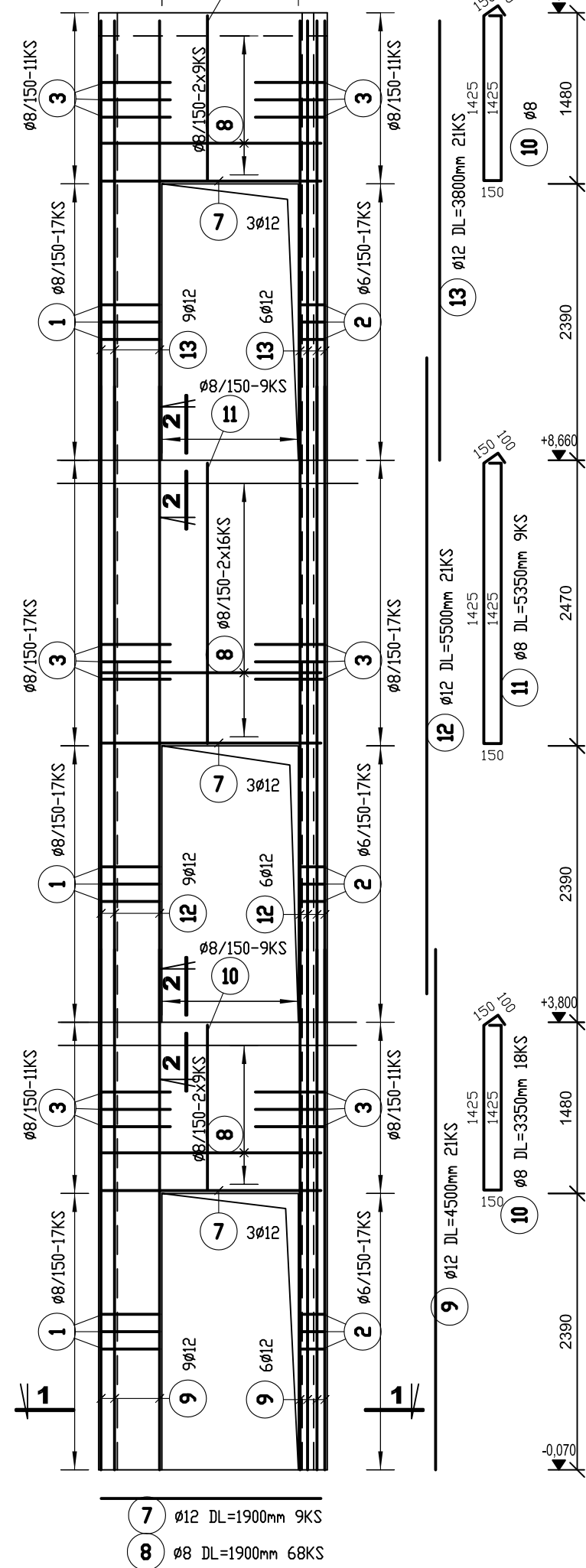
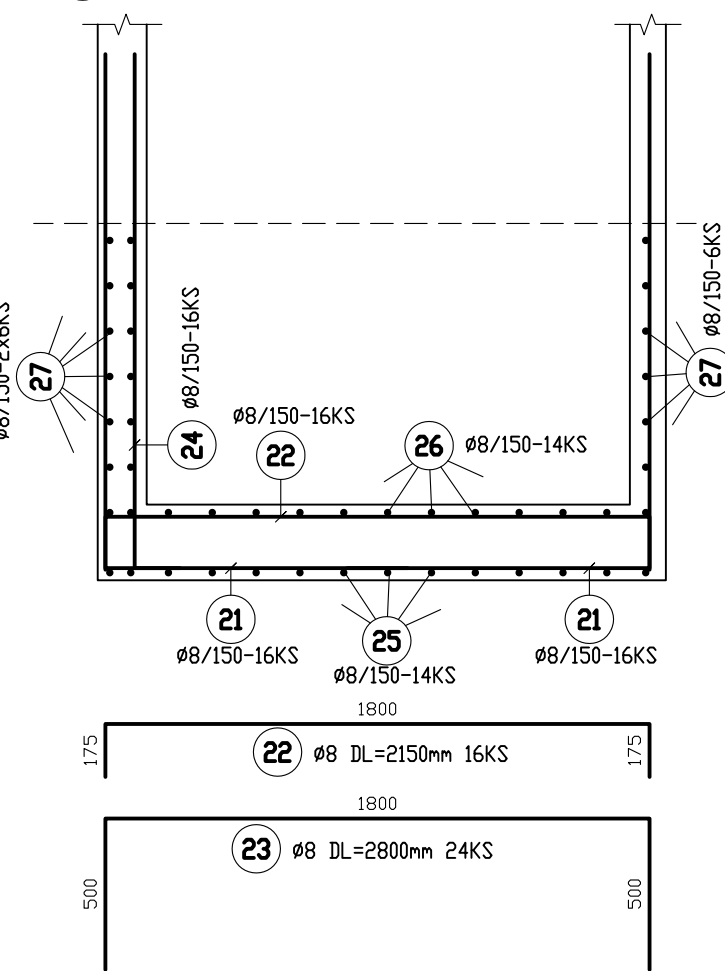
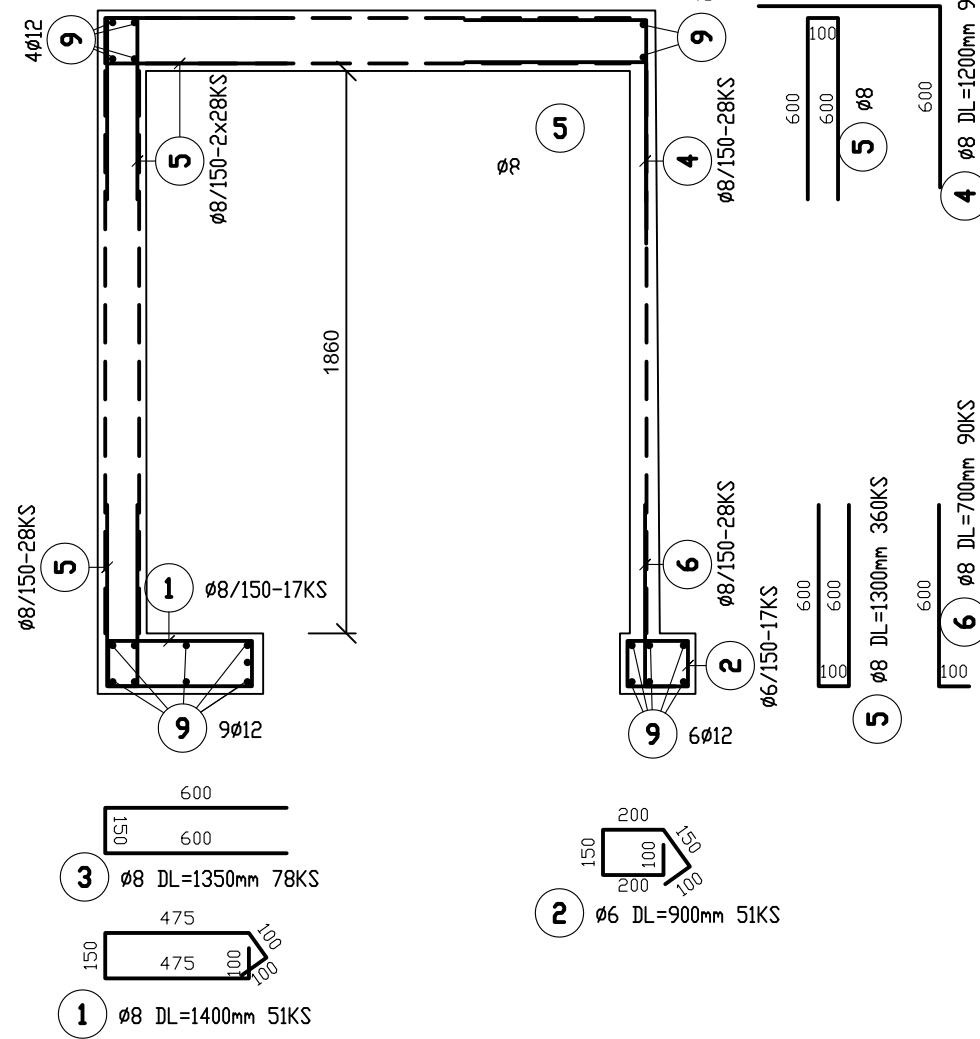


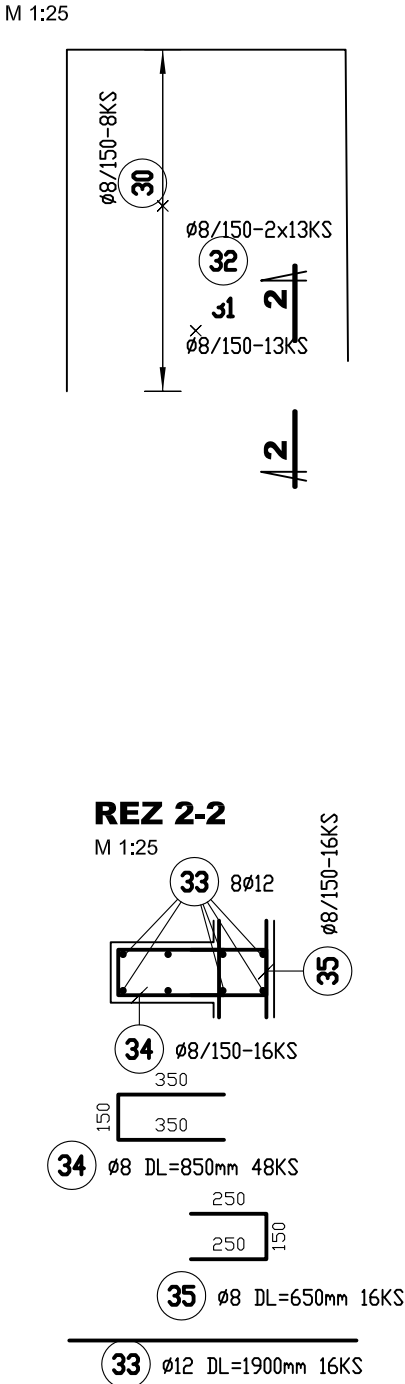
VÝŤAH VŠ1



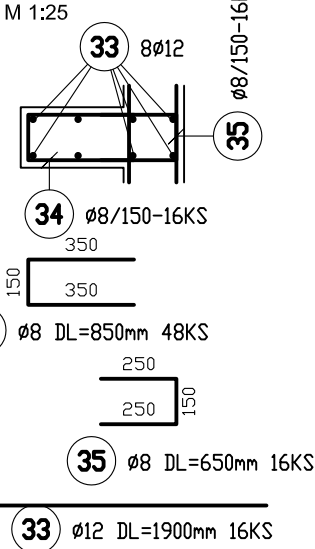
REZ 1-1



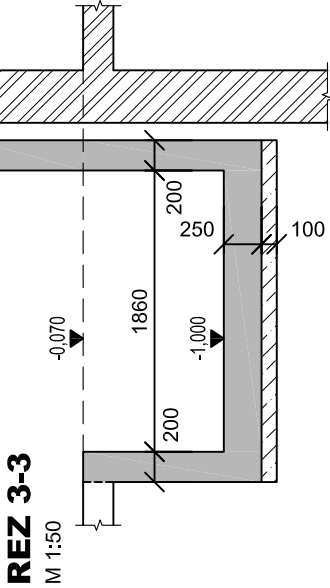
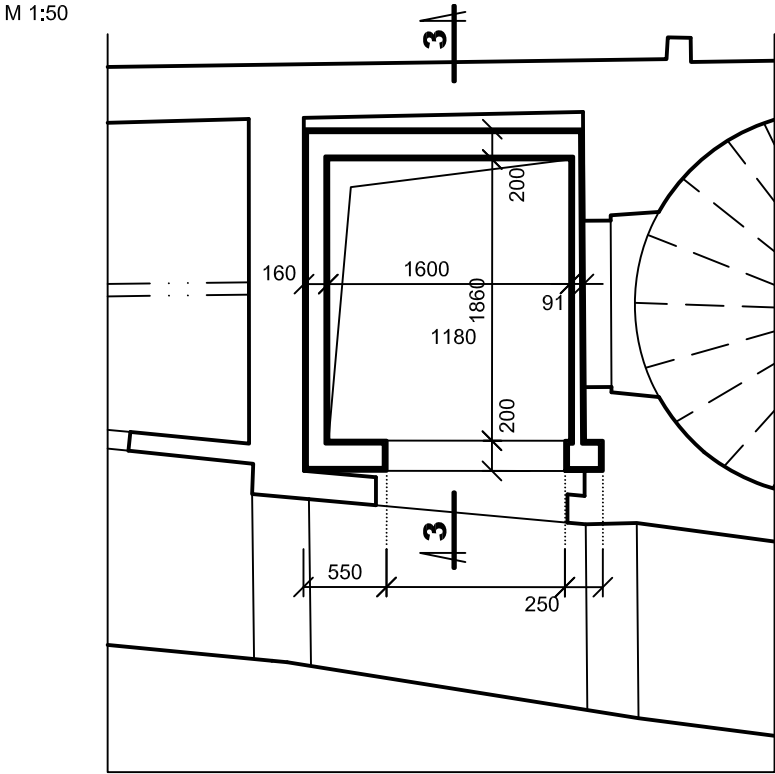
PRESTREŠENIE



REZ 2-2



PÓDORYS



| VÝKAZ VÝSTUŽE |                 |    |              |     |           |        |        |         |        |
|---------------|-----------------|----|--------------|-----|-----------|--------|--------|---------|--------|
| PRVOK         | POL.            | ø  | DLŽKA<br>[m] | KS  | DLŽKA - m |        |        |         |        |
|               |                 |    |              |     | B 500 B   | ø8     | ø12    |         |        |
| VÝŤAH         | 1               | 8  | 1.40         | 51  |           | 71.40  |        |         |        |
|               | 2               | 6  | 0.90         | 51  | 45.90     |        |        |         |        |
|               | 3               | 8  | 1.35         | 78  |           | 105.30 |        |         |        |
|               | 4               | 8  | 1.20         | 90  |           | 108.00 |        |         |        |
|               | 5               | 8  | 1.30         | 360 |           | 468.00 |        |         |        |
|               | 6               | 8  | 0.70         | 90  |           | 63.00  |        |         |        |
|               | 7               | 12 | 1.90         | 9   |           |        | 17.10  |         |        |
|               | 8               | 8  | 1.90         | 68  |           | 129.20 |        |         |        |
|               | 9               | 12 | 4.50         | 21  |           |        | 94.50  |         |        |
|               | 10              | 8  | 3.35         | 18  |           | 60.30  |        |         |        |
|               | 11              | 8  | 5.35         | 9   |           | 48.15  |        |         |        |
|               | 12              | 12 | 5.50         | 21  |           |        | 115.50 |         |        |
|               | 13              | 12 | 3.80         | 21  |           |        | 79.80  |         |        |
|               | 21              | 8  | 2.70         | 32  |           | 86.40  |        |         |        |
|               | 22              | 8  | 2.15         | 16  |           | 34.40  |        |         |        |
|               | 23              | 8  | 2.80         | 24  |           | 67.20  |        |         |        |
|               | 24              | 8  | 1.85         | 16  |           | 29.60  |        |         |        |
|               | 25              | 8  | 4.50         | 14  |           | 63.00  |        |         |        |
|               | 26              | 8  | 2.60         | 14  |           | 36.40  |        |         |        |
|               | 27              | 8  | 3.20         | 18  |           | 57.60  |        |         |        |
|               | 28              | 8  | 1.90         | 14  |           | 26.60  |        |         |        |
|               | 29              | 8  | 1.95         | 14  |           | 27.30  |        |         |        |
|               | 30              | 8  | 3.90         | 8   |           | 31.20  |        |         |        |
|               | 31              | 8  | 2.20         | 13  |           | 28.60  |        |         |        |
|               | 32              | 8  | 1.60         | 26  |           | 41.60  |        |         |        |
|               | 33              | 12 | 1.90         | 16  |           |        | 30.40  |         |        |
|               | 34              | 8  | 0.85         | 48  |           | 40.80  |        |         |        |
|               | 35              | 8  | 0.65         | 16  |           | 10.40  |        |         |        |
|               | CELKOM          |    |              |     |           | m      | 45.90  | 1634.45 | 337.30 |
|               |                 |    |              |     |           | kg/m   | 0.222  | 0.395   | 0.888  |
|               |                 |    |              |     |           | kg     | 10.19  | 645.61  | 299.52 |
|               | HMOTNOSŤ CELKOM |    |              |     |           | kg     |        | 955.32  |        |

POZNÁMKY:

- DO STIEN VÝTAHOVEJ ŠACHTY OSADIŤ MONTÁŽNE NOSNÍKY
- REZIMERY A KONŠTRUKCIU VÝTAHOVEJ ŠACHTY OVERIŤ, RESP. DOPLNIŤ PODĽA POŽIADÁVIEK DODÁVATEĽA VÝTAHU.

KRYTIE NOSNEJ VÝSTUŽE: 25mm

VÝSTUŽ: B 500 B

BETÓN: C20/25-XC1 (SK)-CI 0,4-Dmax16-S3

|   |                              |                     |
|---|------------------------------|---------------------|
| HL. PROJEKTANT  | ZODP. PROJEKTANT             | VYPRACOVAL          |
| ING. ARCH. MATÚŠ IVANIČ   | ING. TOMÁŠ DUBA              | ING. MARTIN MICHLÍK |
| INVESTOR: GIB, HLAVNÉ MESTO SR BRATISLAVA, PRIMACIÁLNE NÁMESTIE Č.1, 814 99 BA  |                              |                     |
| NÁZOV A MIESTO STAVBY:<br>PROJEKTOVÁ PRÍPRAVA OBNOVY OBJEKTU DOM HUDBY<br>PANENSKÁ 11, BRATISLAVA, súp. č. 659, parc. č. 3199, Bratislava - Staré Mesto |                              |                     |
| ČASŤ:   | D 1.2 STATIKA                |                     |
| OBSAH VÝKRESU:  | KONŠTRUKCIA VÝTAHOVEJ ŠACHTY |                     |

|        |         |                |
|--------|---------|----------------|
| STUPEŇ | DRP     | ČÍSLO VYHOTOV. |
| DÁTUM  | 12/2017 |                |
| FORMÁT | 4x A4   | ČÍSLO VÝKRESU  |
| MIERKA | 1: 25   | 1.2 - 08       |